

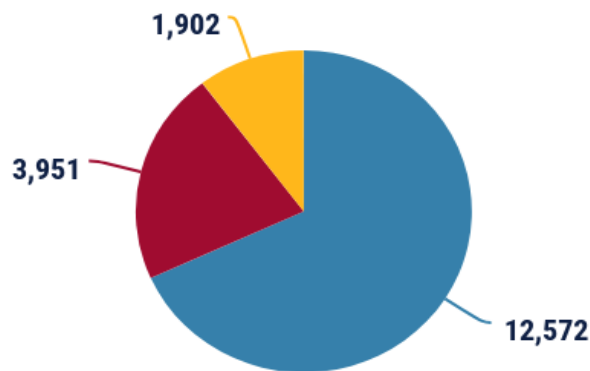
# ALAMANCE COUNTY PROFILE

COURT DISTRICT 15A

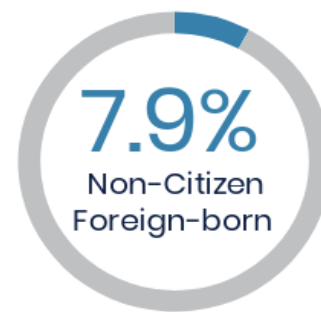
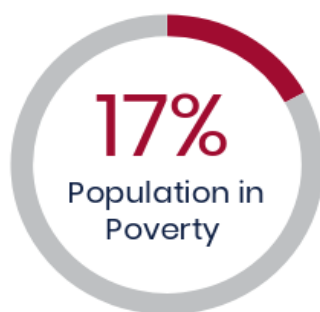
## ALAMANCE COUNTY POPULATION SNAPSHOT

<b>20.7%</b> African American Population	<b>11.9%</b> Hispanic Population	<b>5.5%</b> Limited English Proficiency	<b>1,104</b> DV Clients w/ <b>950</b> Court Services
--	--	---	--

### Driver's License Suspensions - Unpaid Fees and Fines and Failure to Appear (1980 to 2018)



● failure to appear in court ● failure to pay traffic costs ● combination of both

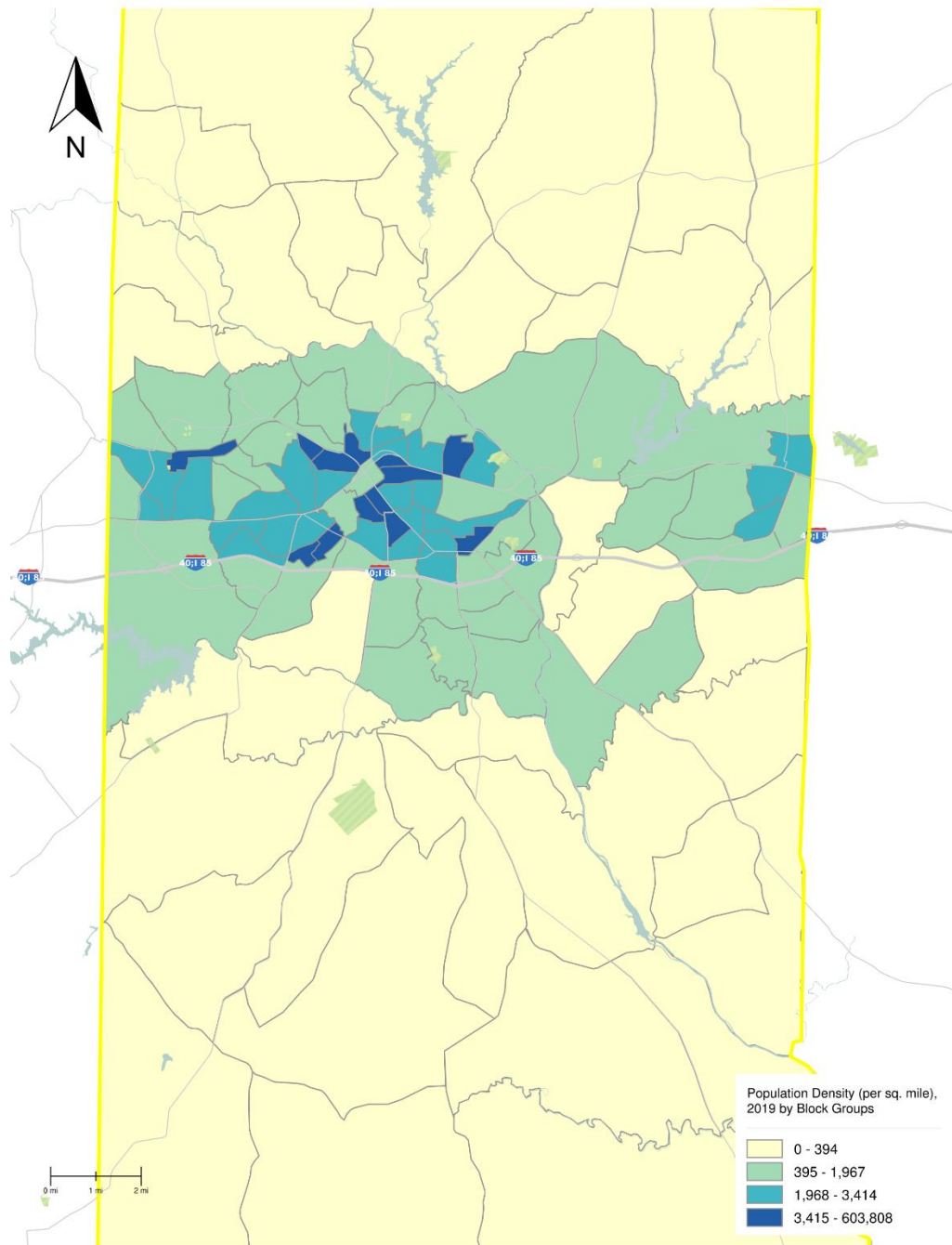


**Data Sources:** American Community Survey, 2014-2018;  
Eviction Lab, 2016; NC Department of Administration, 2018-2019;  
NC Administrative Office of the Courts, 1980-2018

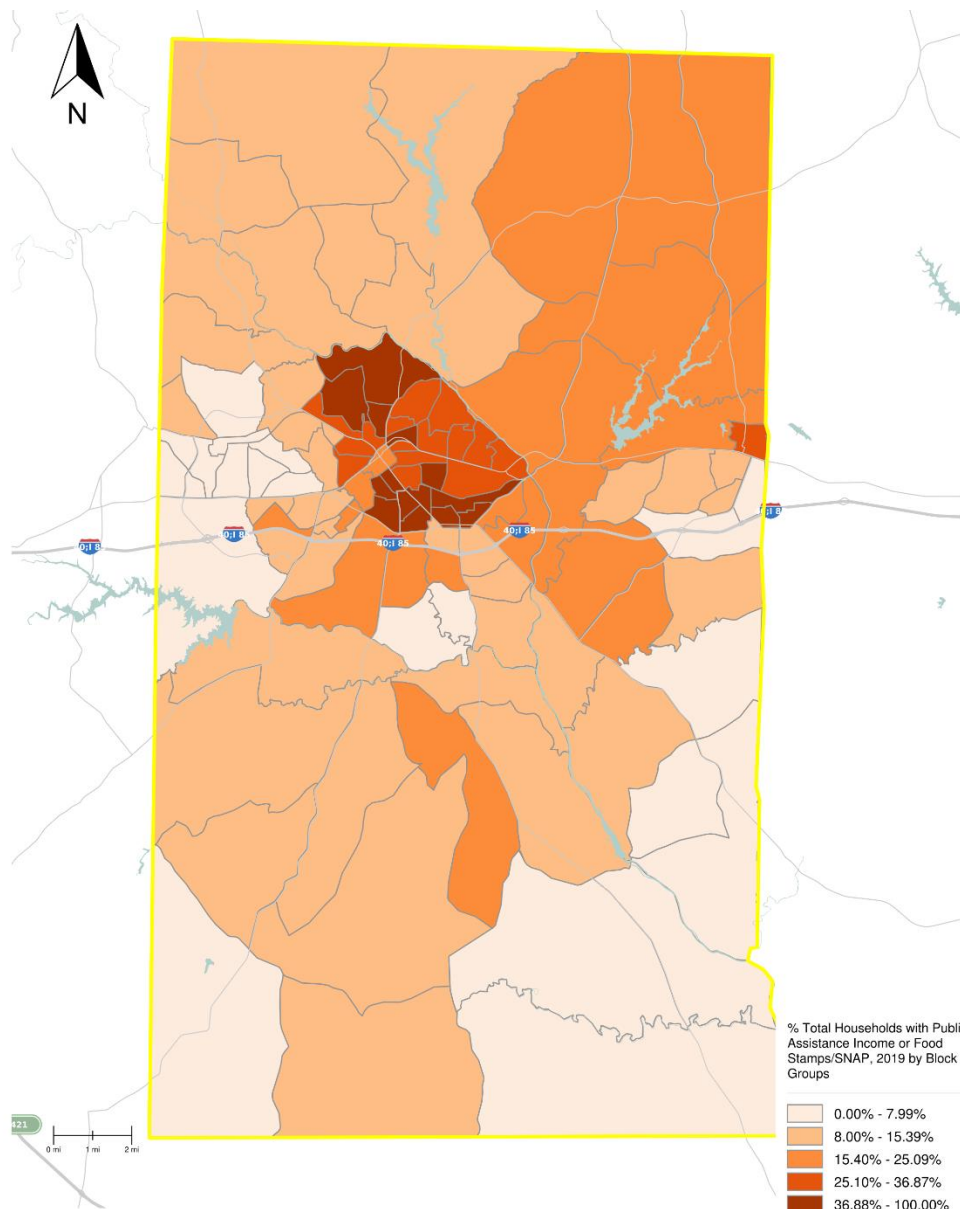
# ALAMANCE COUNTY PROFILE

COURT DISTRICT 15A

## COMMUNITY OVERVIEW

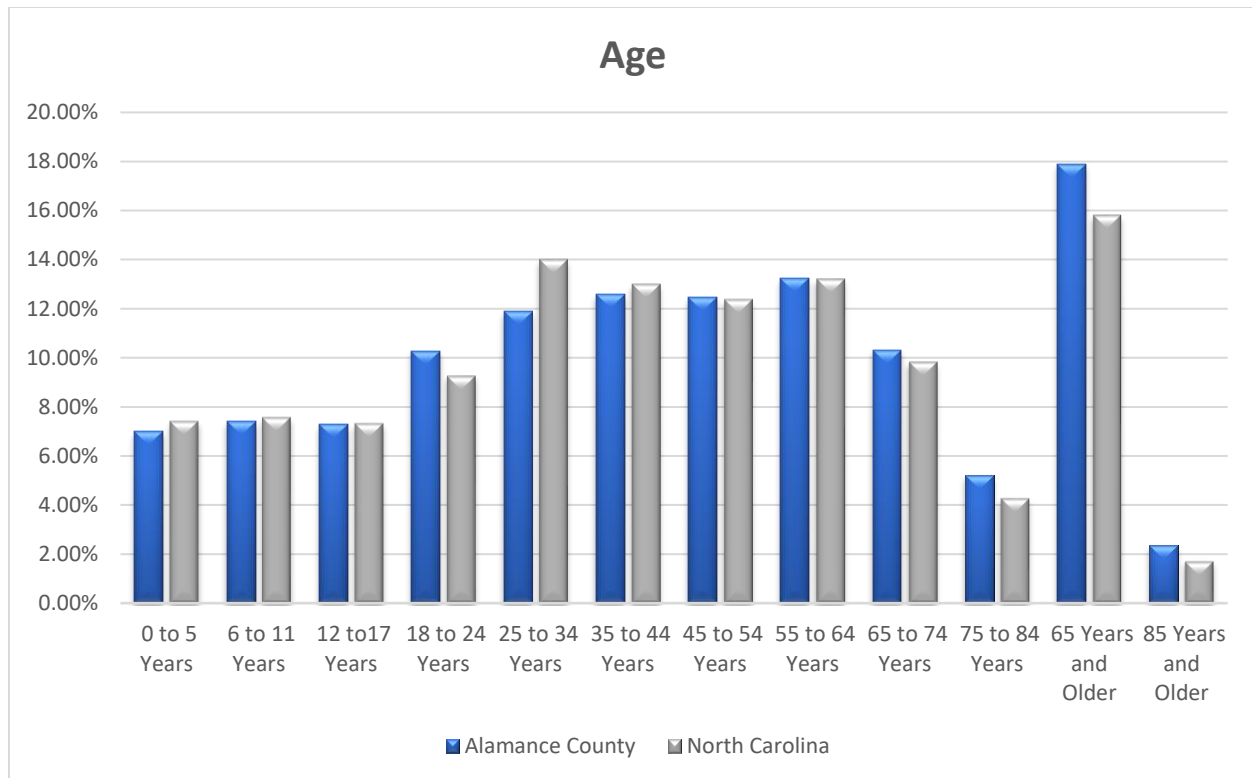


Formed in 1849 from Orange County to the east, Alamance County has been the site of significant historical events, textile manufacturing, and agriculture. It has a total area of 435 square miles and a population of 167,324 (USDC, 2018). The county was once the state leader in dairy production. The largest university in Alamance County is Elon University (1,886 degrees awarded in 2017). According to Data USA, the largest industries in Alamance County, NC are Health Care & Social Assistance (12,201 people), Manufacturing (12,109 people), and Retail Trade (9,133 people), and the highest paying industries are Mining, Quarrying, & Oil & Gas Extraction (\$58,333), Utilities (\$48,958), and Finance & Insurance (\$45,873).



## KEY DEMOGRAPHICS

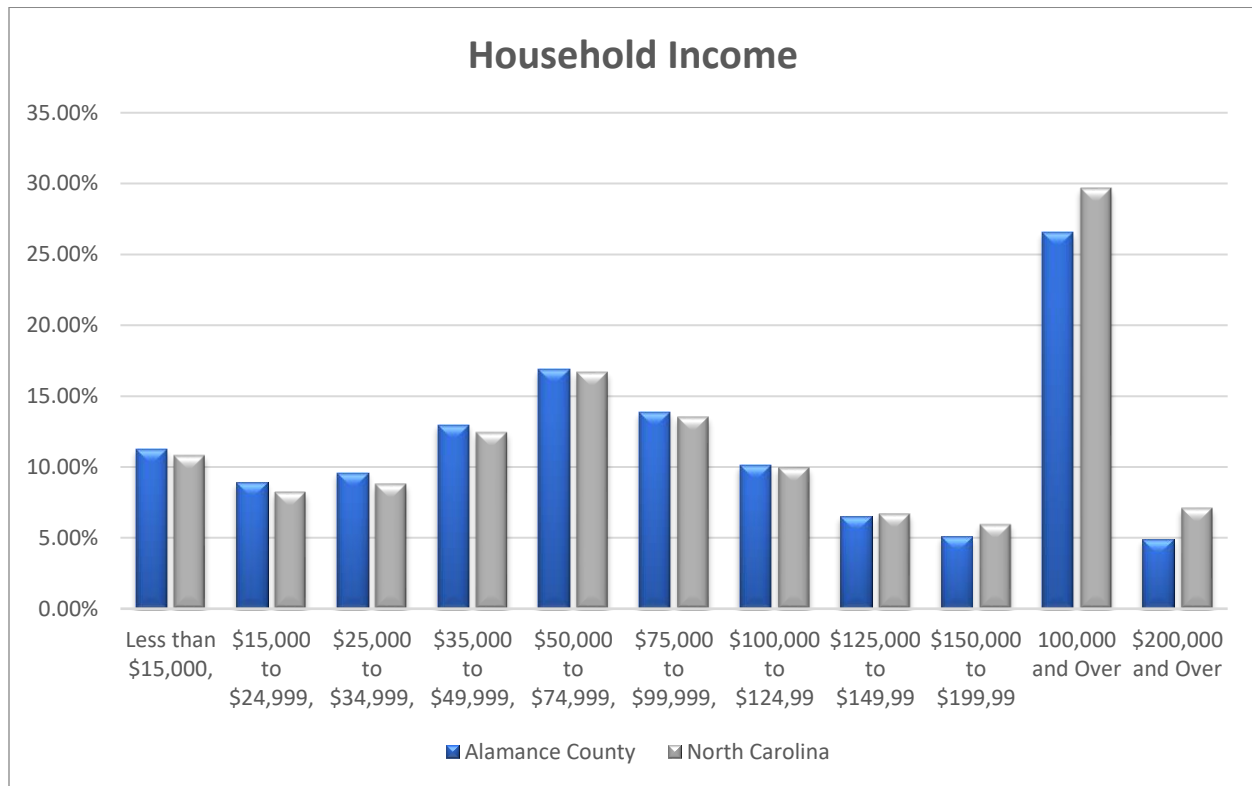
	Alamance County		North Carolina	
<b>POPULATION</b>				
Population (Pop)	167,324		10,431,485	
Average Population Density (per sq. mile)	395		215	
Population Growth (2017/2010)	6.26%		6.91%	
Urban Population	119,763	71.58%	7,038,681	67.48%
Rural Population	47,561	28.42%	3,392,804	32.52%
<b>RACE &amp; ETHNICITY</b>				
Asian	2,424	1.45%	288,943	2.77%
Black	34,550	20.65%	2,340,513	22.44%
White	115,048	68.76%	6,913,607	66.28%
Hispanic	19,935	11.91%	959,176	9.20%
White Non-Hispanic	107,027	63.96%	6,519,988	62.50%
American Indian and Alaska Native	1,421	0.85%	138,152	1.32%
<b>INCOME</b>				
Mean Household Income	\$78,292.47		\$85,957.61	
Median Household Income	\$60,807.00		\$64,706.00	
Per Capita Income	\$31,518.00		\$34,495.00	
<b>EDUCATION</b>				
< High School	18,494	16.24%	990,920	13.89%
High School	31,162	27.37%	1,843,993	25.84%
> High School	64,215	56.39%	4,301,593	60.28%
<b>LANGUAGE</b>				
English	138,617	82.84%	8,670,176	83.12%
Spanish	15,746	9.41%	736,763	7.06%
Other Indo-European Languages	1,641	0.98%	170,777	1.64%
Asian or Pacific Island Language	1,410	0.84%	158,938	1.52%
Other Language	219	0.13%	50,052	0.48%
<b>HOUSING</b>				
Housing Units	72,956		4,751,332	
Occupied Units	66,324	90.91%	4,124,750	86.81%
Vacant Units	6,632	9.09%	626,582	13.19%
Owner Occupied	42,654	64.31%	2,673,138	64.81%
Renter Occupied	23,670	35.69%	1,451,612	35.19%



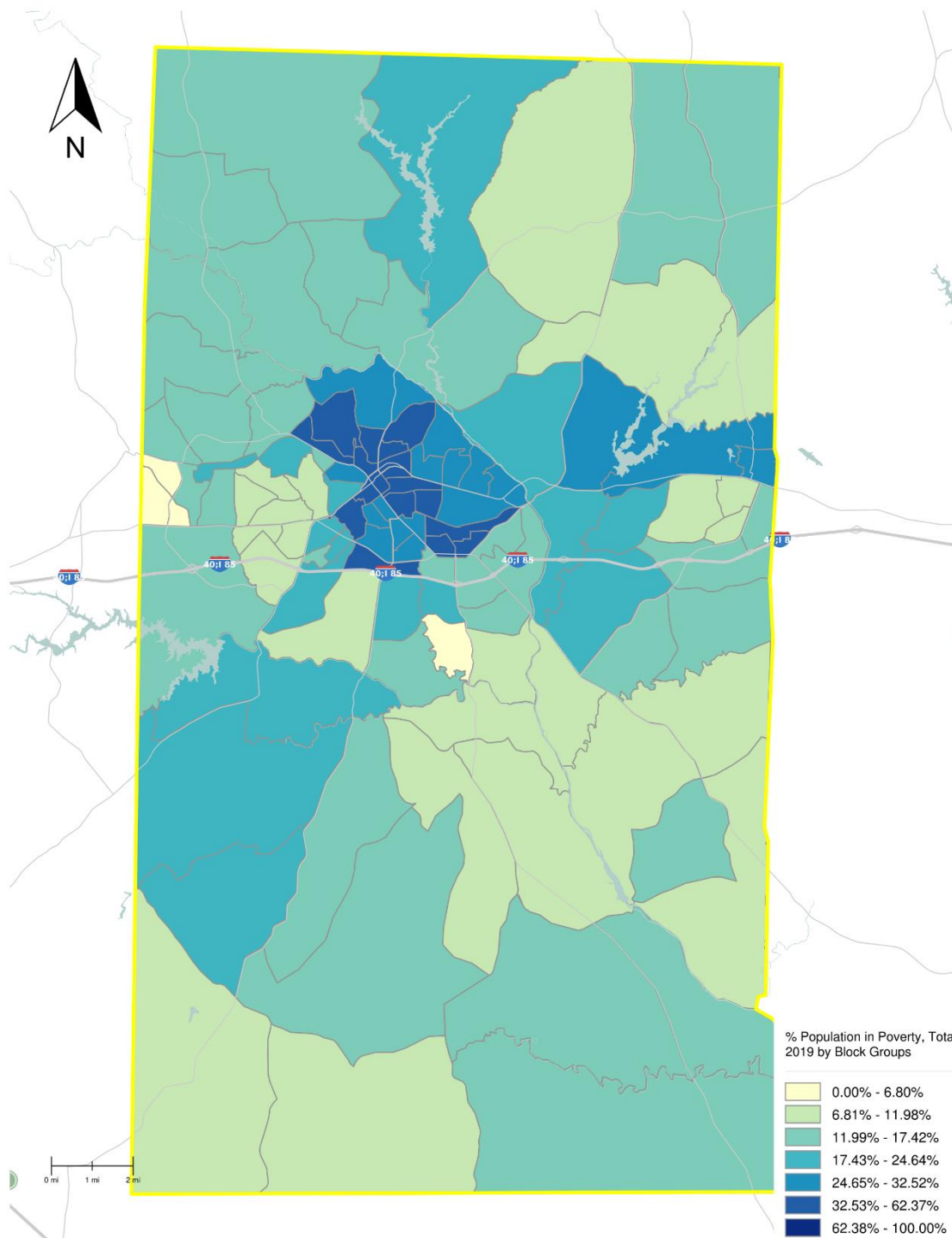
## POPULATION DYNAMICS

**According to the American Community Survey (2019), Alamance County had a population of 167,324. It ranks the 17th most populated county in NC and has experienced a population increase of 9.68% since 2010 and 21.82% since 2000. The median age was 39.9 years old with 17.89% of the population 65 years or older and 21.66% being children under 18. The population was mostly White (68.76%) and Black/African American 20.65%. About 6.44% of the population are veterans (ACS 2019) and 10.63% of the population 18 years old and older are disabled (Experian Simmons 2018).**

## ECONOMICS



**The unemployment rate was 3.2% in Alamance County (Bureau of Labor Statistics, Dec 2019). According to the 2019 American Community Survey, the median household income in Alamance County was \$60,807. More than one-in-six (18.48%) were in poverty (ACS 2019). Between 2014 and 2018, there were an estimated 11.9% of the people in Alamance County had no health insurance (ACS 2019). Educational attainment in Alamance County was 27.37% of adults completing at least high school or a GED and 56.39% of adults have a higher education degree (bachelor’s, master’s, or doctorate; ACS 2019). The average freshman high school graduation rate in the 2009-2010 school year was 74.0% (National Center for Education Statistics). There are 3 head start centers in the county (Head Start 2019).**



## AFFORDABILITY

The eviction rate in Alamance County was 6.49% and the number of evictions in 2016 was 1446. The percent of households receiving public assistance income/food stamps/SNAP was 16.91%. About one-in-five (19.88%) homeowners and almost half (46.14%) of renters are cost burdened, spending more than 30% of income on housing-related costs (ACS 2014-2018). The average household spent \$7,585 on transportation costs in 2019 (Easy Analytic Software, Inc. - Consumer Expenditures (CEX) Database, 2019) and 6.05% of households do not have a vehicle (ACS 2019). The average household spent \$2,898 on utilities in 2019 (Easy Analytic Software, Inc. - Consumer Expenditures (CEX) Database).

## HEALTH

The major hospitals in Alamance County are Cone Health Alamance Regional Medical Center and Cone Hospital, Burlington NC. There are 3 mental health facilities and 3 drug and alcohol treatment facilities in this area (SAMHSA, 2016). In addition, only one census tract in Alamance County has been designated as Medically Underserved Areas for having too few primary care providers, high infant mortality, high poverty, and/or a high elderly population by the Health Resources and Services Administration (HRSA 2019). About a quarter of residents (23.48%) self-report poor physical health and a fifth (20.18%) report poor mental health in the past 30 days (CDC BRFSS, 2013).

## QUALITY OF LIFE

In Alamance County 89.54% of households have internet access, but that was not distributed equally throughout the county. Alamance County ranked “high” in terms of social vulnerability, which was a variable that considers four categories: socioeconomic (ranked as “moderate to high”); and household composition (ranked as “moderate to high”); minority and language (ranked as “high”); and housing and transportation (ranked as “high”; CDC 2016). The EASI Total Crime Index value for the county was 98 out of a scale of 200 (2019). A higher value indicates more crime than average.



